

MARTY'S COUNTRY KNITTING BASKET

Marty Margenthaler

315 E. Ruehl St.

Forsyth, IL 62535

(217) 875-7412

This is a Double Mitten, therefore, any fairisle design placed in this mitten works very well. We've included a "Winter Snowflake" design for your use.



Yarn: Trenzado

Tension: 6

Sizes: Adult (Child)

DOUBLE MITTEN

(Knit similar to Marty's Stocking Cap Pattern.)

- 1) Pull 60 (50) sts. to B position. Push back EON. Hang Cast on comb. Knit 1 row to left, drop comb. Pull out of work needles to B position with the others. Knit to the right. Keep comb in the knitting while knitting the entire mitten... (for use with hanging a hem.)
RC 000. Knit to Row 66 (45).
- 2) By hand, knit 13 edge stitches (opposite carriage) on scrap yarn for 2 rows.
* On second mitten, knit 1 extra row to get thumb placement on opposite edge. Put these 13 scrapped-off stitches into hold position and set your machine for hold. Knit 2 rows. Set machine for Normal Knitting. Knit 20 rows.
- 3) Transfer for ribbing. Rib at Tension 3/2 for 80-90 rows (60).
- 4) Transfer to main bed. RC 000. Knit to row 20.
- 5) Again, by hand, knit 13 edge sts. onto scrap yarn- the same side as before. Knit 2 rows with the 13 edge sts. in hold. RC 000. Knit to row 16 and begin the "Winter Snowflake Design" (6 and begin design). Knit to row 64 (45).
- 6) ~~Pull EON to E position. Hang hem by lifting the comb and putting the cast on loops onto the EON in E position. Knit 2 rows.~~ Reduce sts. by: Running the Lace Carriage left to right, Push EON back to B position, Run Lace Carriage to the left. Push back the empty needles, and pull the doubled sts. to E position. Knit 1 row.
- 7) Using a double-eye needle, take the sts. off onto a strong cotton thread. Pull all sts. together, forming the top of the mitten.

THUMB: Cut through the middle of your scrap rows with sharp scissors. Rehang 26, plus 2 sts. where you knitted the 2 rows (while the 13 end sts. were in hold). With the wrong side facing you, knit 36 rows. Reduce sts. (See #6) Take off onto a cotton thread with a dble eye needle. Repeat this procedure on the 2nd set of 13 sts. Seam the mitten by beginning at the top, seam to the thumb, seam thumb, cont. with mitten. Seam each thickness separately.
Enjoy keeping your hands warm this winter!



Distributor of:
Brother Knitting Machines • Millor Yarns

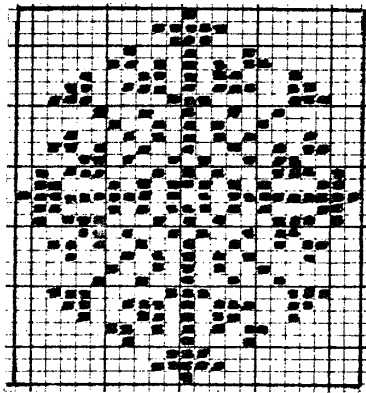
MARTY'S COUNTRY KNITTING BASKET

Marty Margenthaler

315 E. Ruehl St.

Forsyth, IL 62535

(217) 875-7412



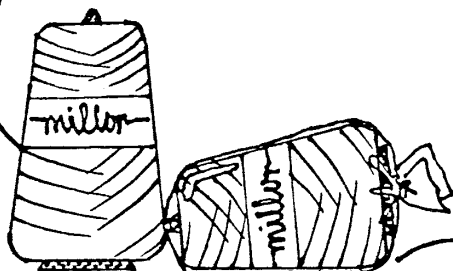
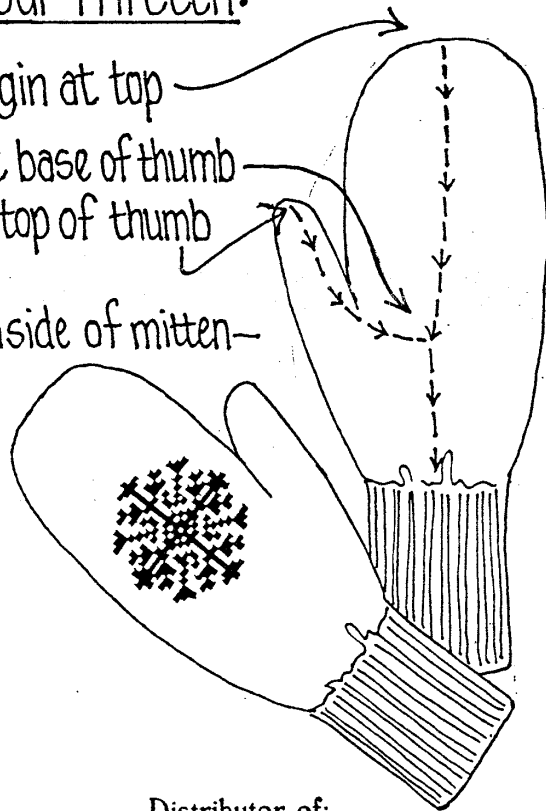
"Winter Snowflake Design"

23 sts.

31 rows

Seaming your Mitten:

- 1) Begin at top
- 2) Stop at base of thumb
- 3) Begin at top of thumb
- 4) Cont. to inside of mitten—
reverse instr.



Distributor of:
Brother Knitting Machines • Millor Yarns